

緯度/経度 hddd° mm.mmm' WGS 84

E140° 56.800'

E140° 57.000'

E140°

N39° 51.200'

N39° 51.200'

N39° 51.000'

N39° 51.000'

N39° 50.800'

N39° 50.800'

N39° 50.600'

N39° 50.600'

N39° 50.400'

N39° 50.400'

56.200'

E140°

56.400'

E140°

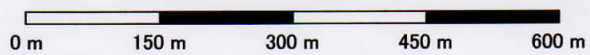
56.600'

E140°

56.800'

E140°

Japan TOPO 10M Plus v1.01
Garmin Corporation 1995-2010
Shobunsha Publications, Inc. 2010



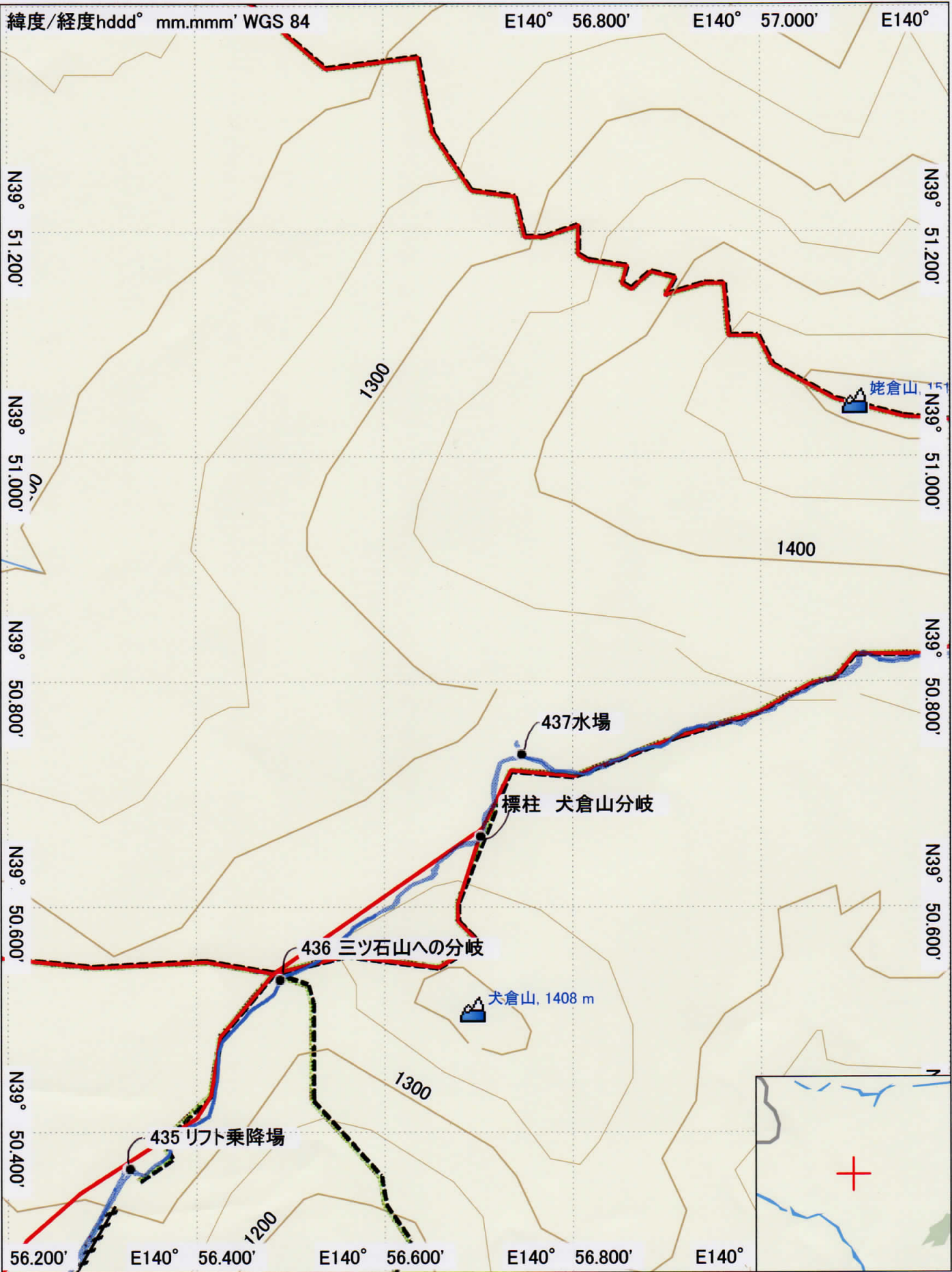
MN TN

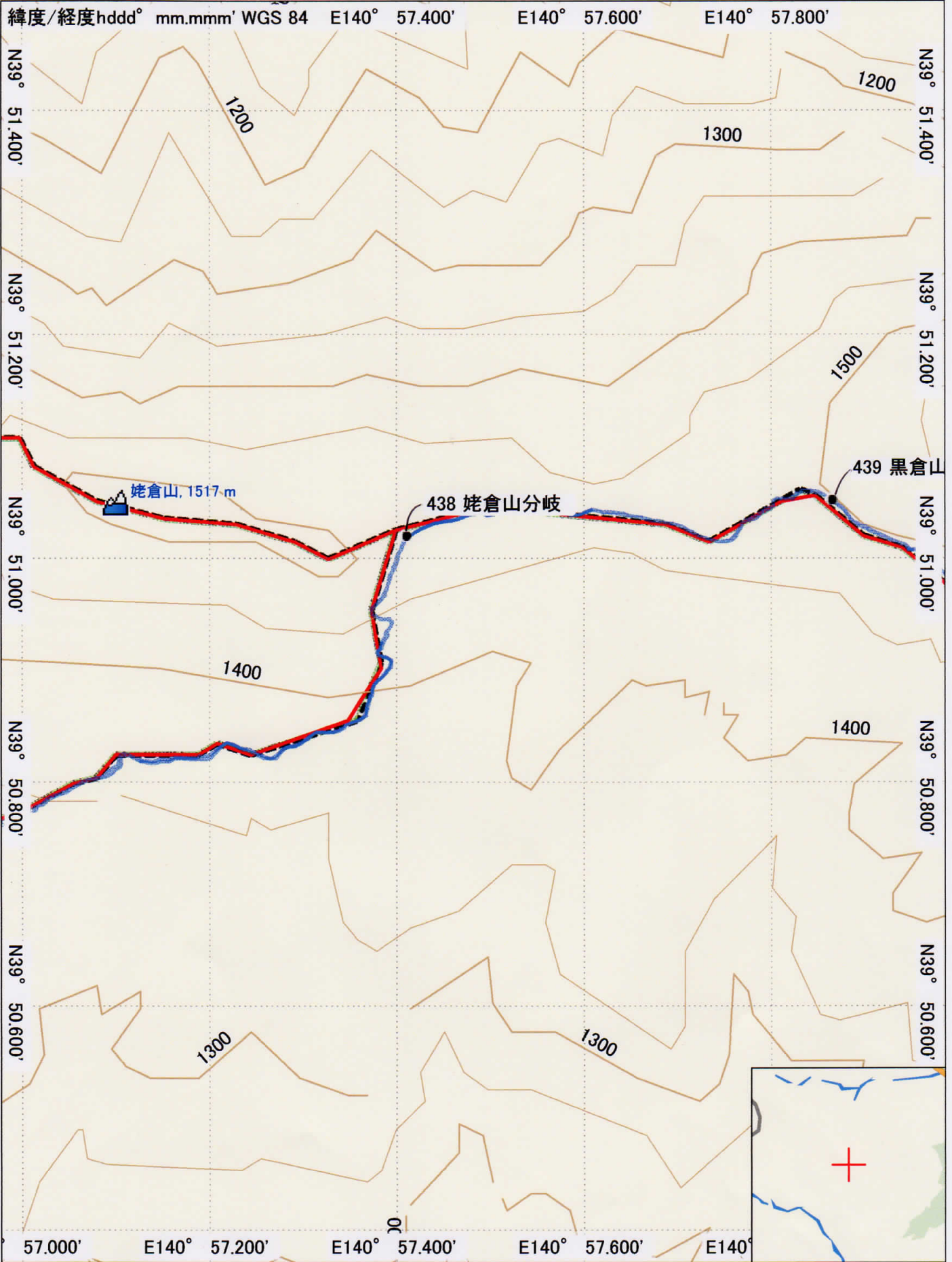
網張～鬼ヶ城～山頂～屏風尾根～網張 (1/5)

-8.1°

GARMIN.

2010/01/01





Japan TOPO 10M Plus v1.01
 Garmin Corporation 1995-2010
 Shobunsha Publications, Inc. 2010



網張〜鬼ヶ城〜山頂〜屏風尾根〜網張 (2/5)

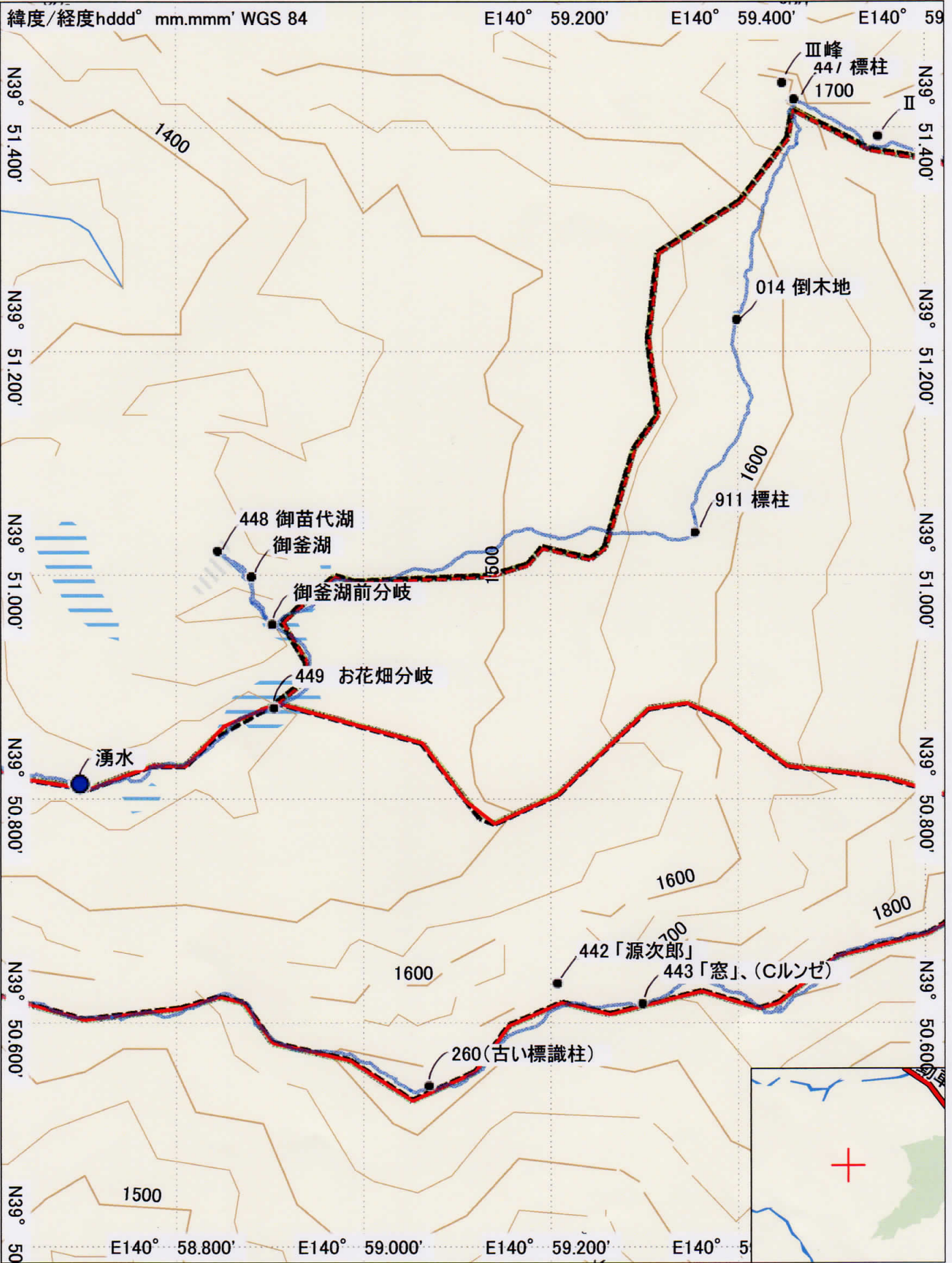
GARMIN.



Japan TOPO 10M Plus v1.01
 Garmin Corporation 1995-2010
 Shobunsha Publications, Inc. 2010

網張～鬼ヶ城～山頂～屏風尾根～網張 (3/5)

GARMIN.



Japan TOPO 10M Plus v1.01
Garmin Corporation 1995-2010
Shobunsha Publications, Inc. 2010

網張～鬼ヶ城～山頂～屏風尾根～網張 (4/5)





Japan TOPO 10M Plus v1.01
 Garmin Corporation 1995-2010
 Shobunsha Publications, Inc. 2010

網張～鬼ヶ城～山頂～屏風尾根～網張 (5/5)