

Japan TOPO 10M Plus v1.01
 Garmin Corporation 1995-2010
 Shobunsha Publications, Inc. 2010



MN TN

七滝口～黒倉山～松川 (1/3) (2016/09/24 調査)
 青色は踏査軌跡 作成: 阿部

GARMIN.

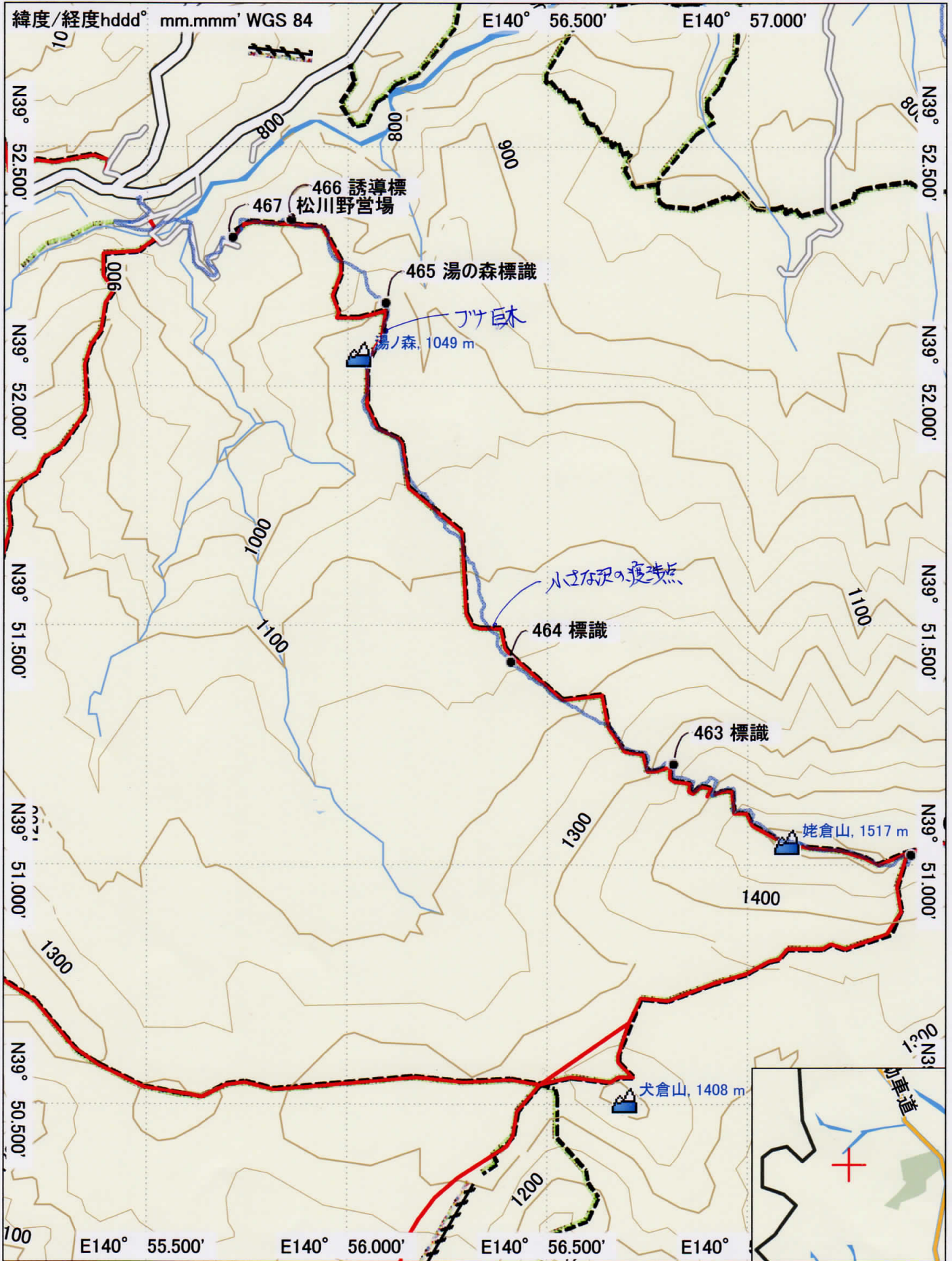
2010/01/01



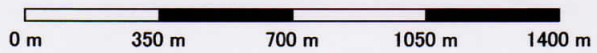
Japan TOPO 10M Plus v1.01
Garmin Corporation 1995-2010
Shobunsha Publications, Inc. 2010

七滝口～黒倉山～松川 (2/3)

GARMIN.



Japan TOPO 10M Plus v1.01
 Garmin Corporation 1995-2010
 Shobunsha Publications, Inc. 2010



MN TN

七滝口～黒倉山～松川 (3/3)

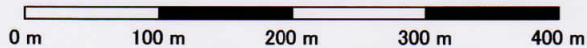
GARMIN.

-8.1°

2010/01/01



Japan TOPO 10M Plus v1.01
 Garmin Corporation 1995-2010
 Shobunsha Publications, Inc. 2010



七滝口～黒倉山～松川 (拡大図: 大地獄付近)

2016. 9. 24 調査. 青色は踏査軌跡. (作成: 阿部)

GARMIN.

2010/01/01