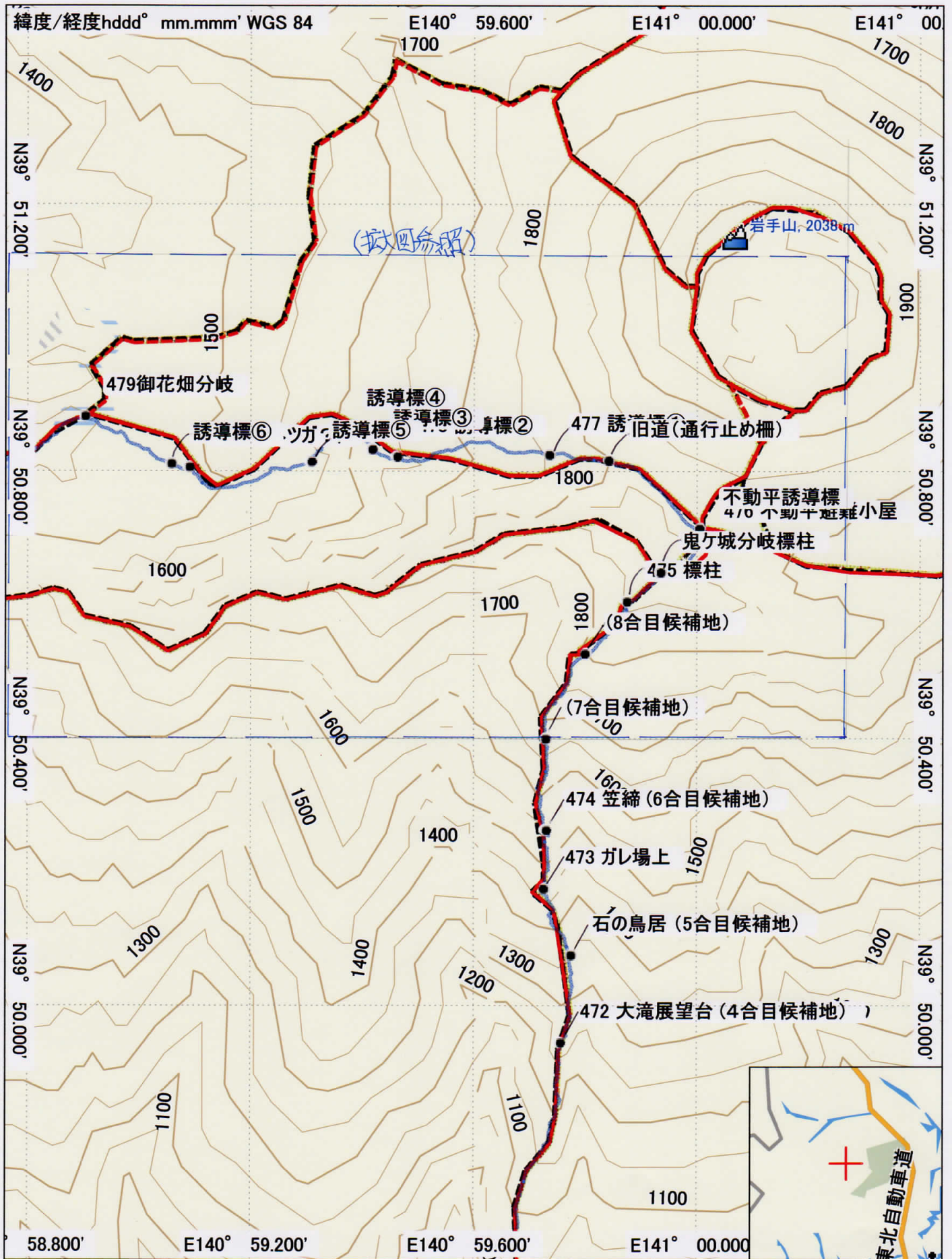


Japan TOPO 10M Plus v1.01  
 Garmin Corporation 1995-2010  
 Shobunsha Publications, Inc. 2010

御神坂口～不動平～お花畑～網張 (1/4) 青色が踏査軌跡

2016.9.30 調査 (作成: 阿部) GARMIN.

2010/01/01



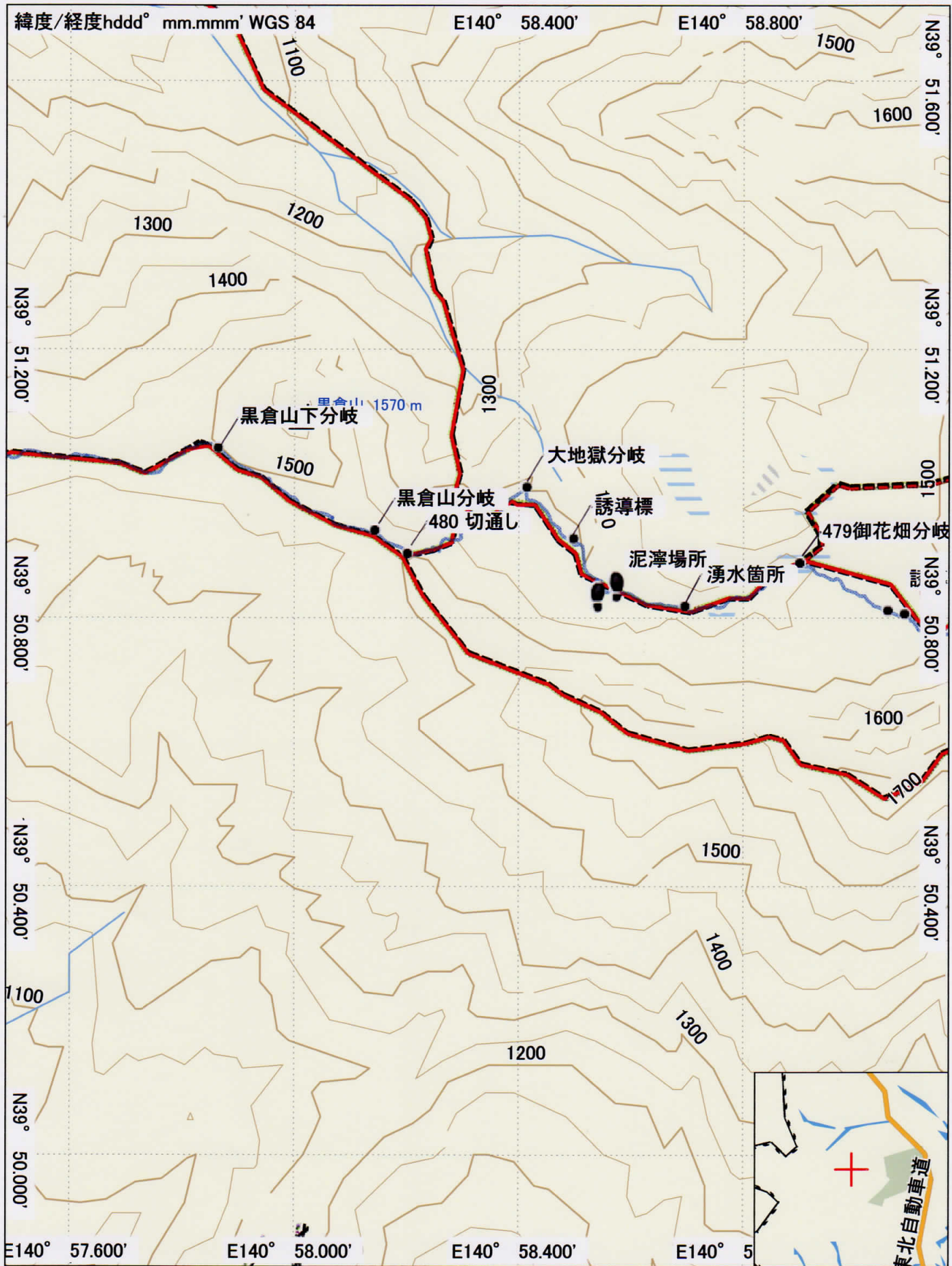
Japan TOPO 10M Plus v1.01  
 Garmin Corporation 1995-2010  
 Shobunsha Publications, Inc. 2010

0 m 250 m 500 m 750 m 1000 m

御神坂口～不動平～お花畑～網張 (2/4)

GARMIN.

MN TN  
 -8.1°  
 2010/01/01



Japan TOPO 10M Plus v1.01  
 Garmin Corporation 1995-2010  
 Shobunsha Publications, Inc. 2010

御神坂口～不動平～お花畑～網張 (3/4)

GARMIN.

緯度/経度 hddd° mm.mmm' WGS 84

E140° 57.200'

E140° 57.600'

N39° 51.200'

N39° 51.200'

N39° 50.800'

N39° 50.800'

N39° 50.400'

N39° 50.400'

N39° 50.000'

N39° 50.000'

E140° 56.400'

E140° 56.800'

E140° 57.200'

Japan TOPO 10M Plus v1.01  
Garmin Corporation 1995-2010  
Shobunsha Publications, Inc. 2010

0 m 250 m 500 m 750 m 1000 m

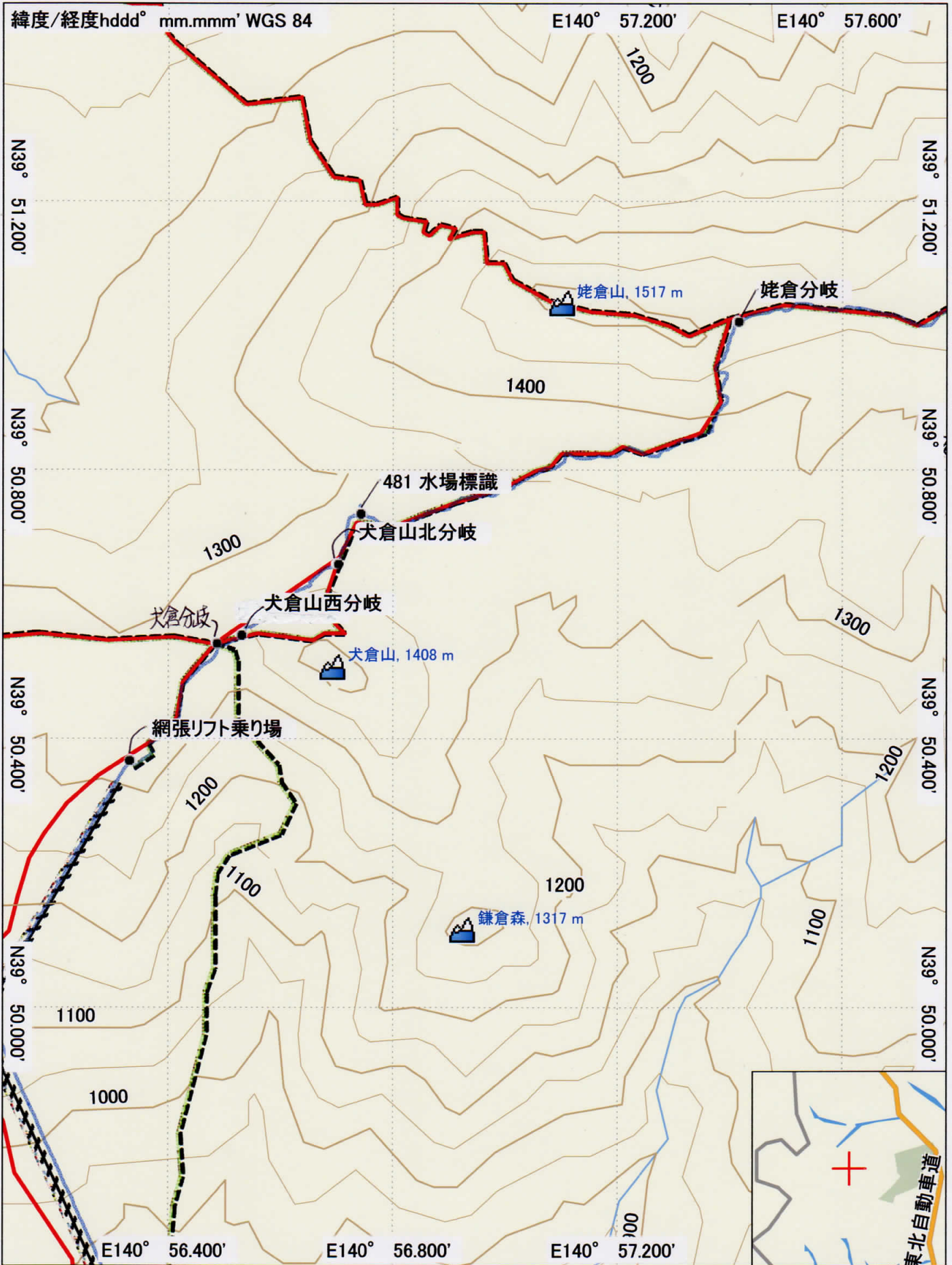
MN TN

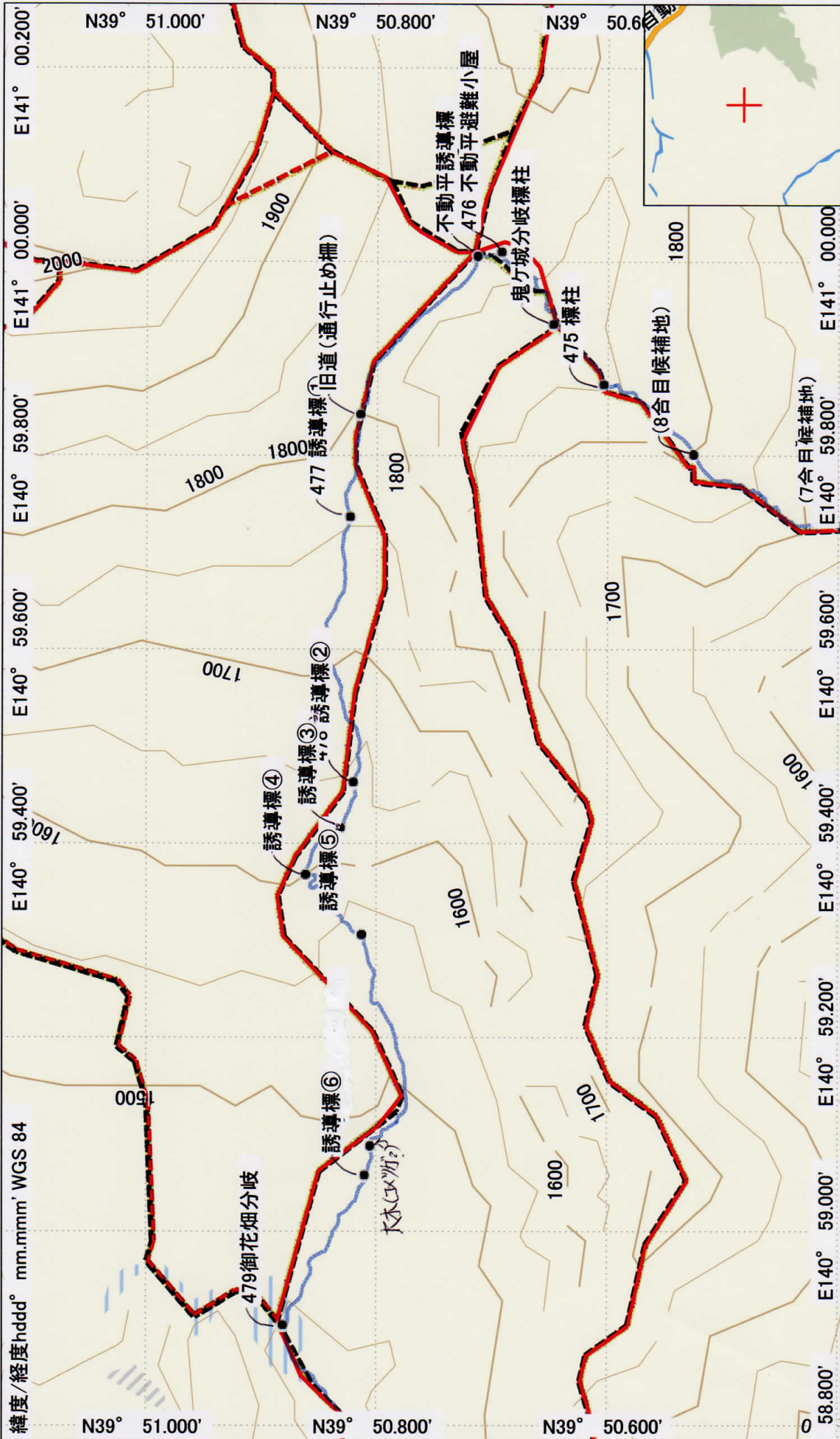
御神坂口～不動平～お花畑～網張 (4/4)

-8.1°

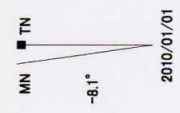
GARMIN.

2010/01/01





Japan TOPO 10M Plus v1.01  
 Garmin Corporation 1995-2010  
 Shobunsha Publications, Inc. 2010



御神坂口～不動平～お花畑～網張 (拡大図：御花畑～不動平)

GARMIN.