

Japan TOPO 10M Plus v1.01
Garmin Corporation 1995-2010
Shobunsha Publications, Inc. 2010

番岳登山口～大深山荘～源太ヶ岳～松川(3/5)

GARMIN.

2010/01/01

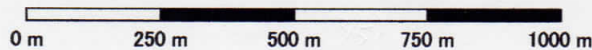
緯度/経度 hddd° mm.mmm' WGS 84

E140° 54.400'

E140° 54.800'



Japan TOPO 10M Plus v1.01
Garmin Corporation 1995-2010
Shobunsha Publications, Inc. 2010



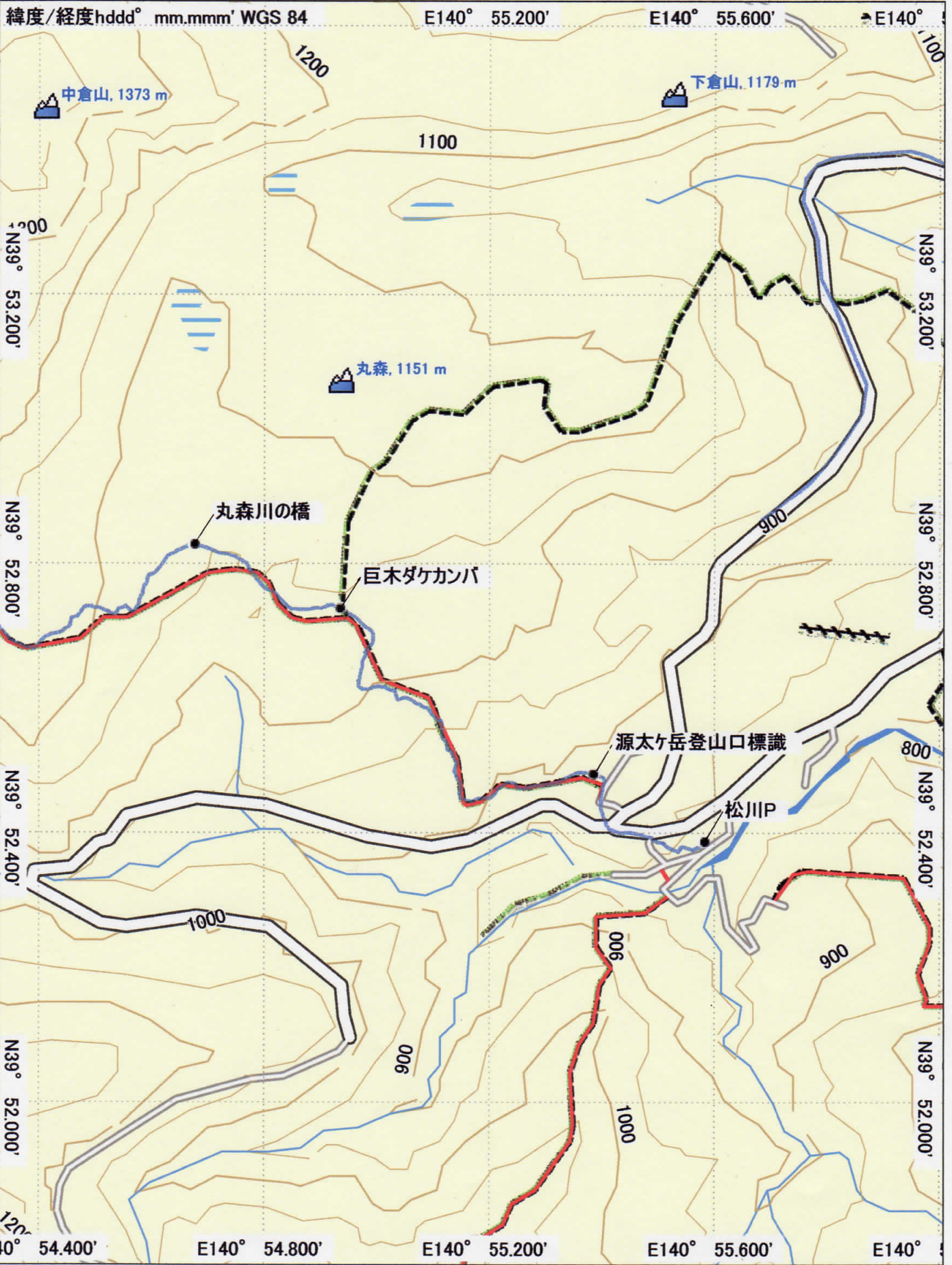
MN TN

畚岳登山口～大深山荘～源太ヶ岳～松川(4/5)

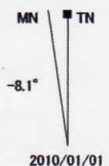
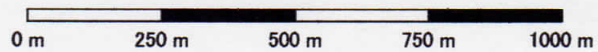
-8.1°

GARMIN.

2010/01/01



Japan TOPO 10M Plus v1.01
 Garmin Corporation 1995-2010
 Shobunsha Publications, Inc. 2010



畚岳登山口～大深山荘～源太ヶ岳～松川(5/5)

GARMIN.

2010/01/01