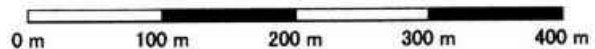


Japan TOPO 10M Plus v1.01
Garmin Corporation 1995-2010
Shobunsha Publications, Inc. 2010



MN TN

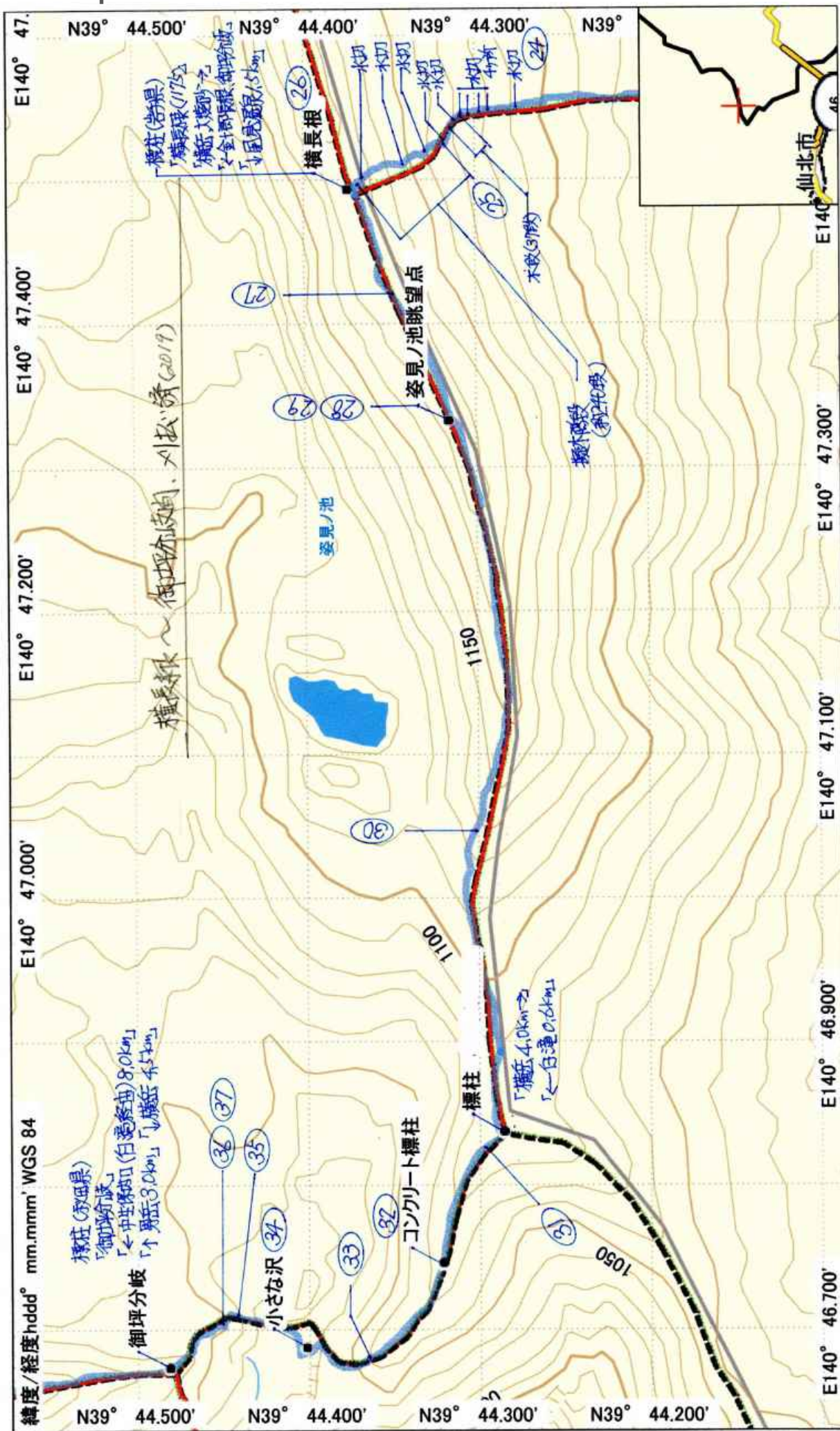
200716 国見～横長根～金十郎長根～男岳 (1/4) (確定版)

青色線: 踏査軌跡, (20) は記載位置に置いた踏査

踏査期日: 2020/07/16. 踏査者: 工藤 兼彦, 広野 孝典, 民村 剛海, 阿部 正顕 (作図: 阿部)

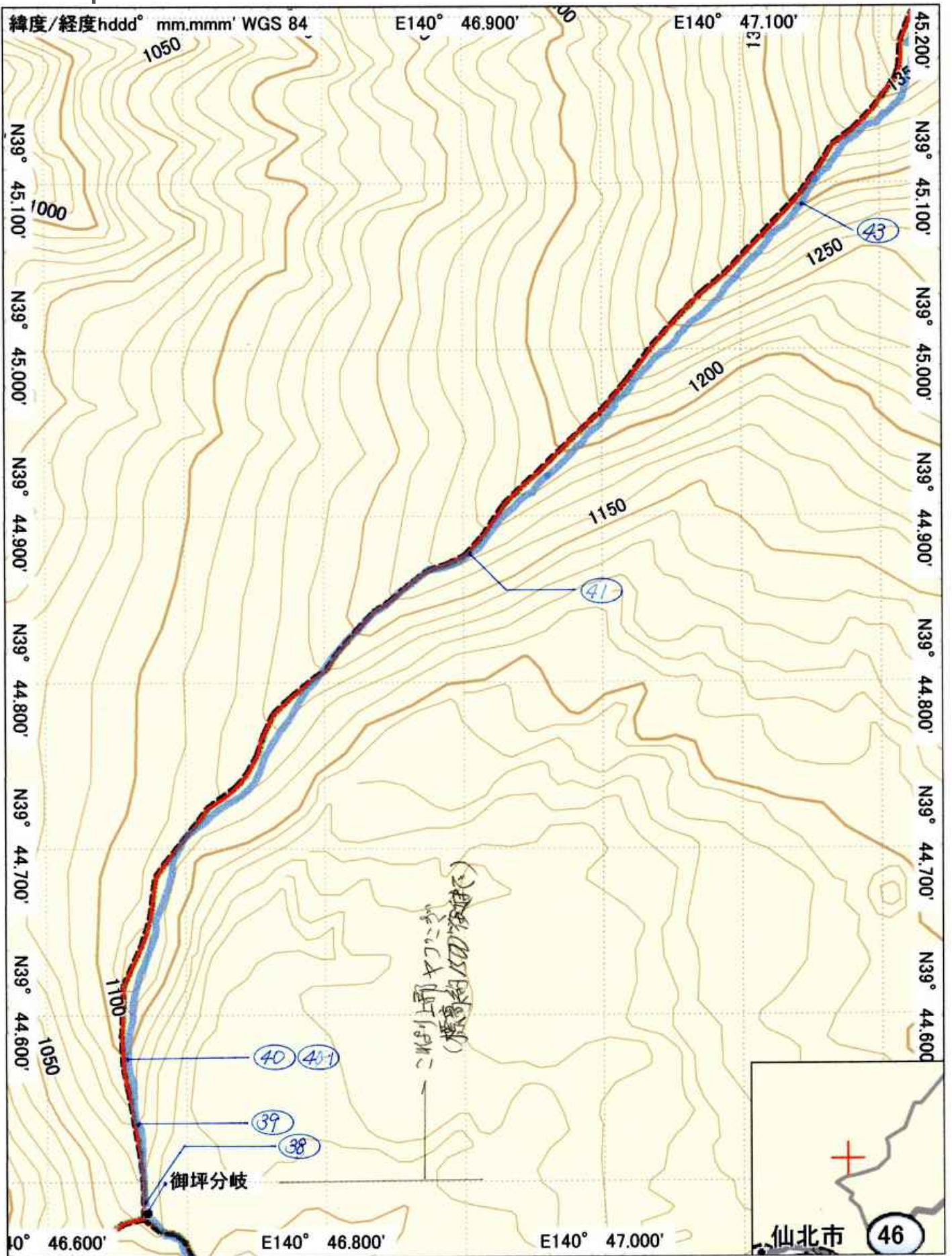
GARMIN.

2010/01/01

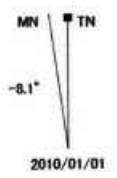
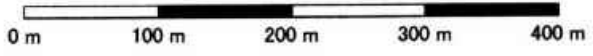


GARMIN.

200716 国見～横長根～金十郎長根～男岳 (3/4)

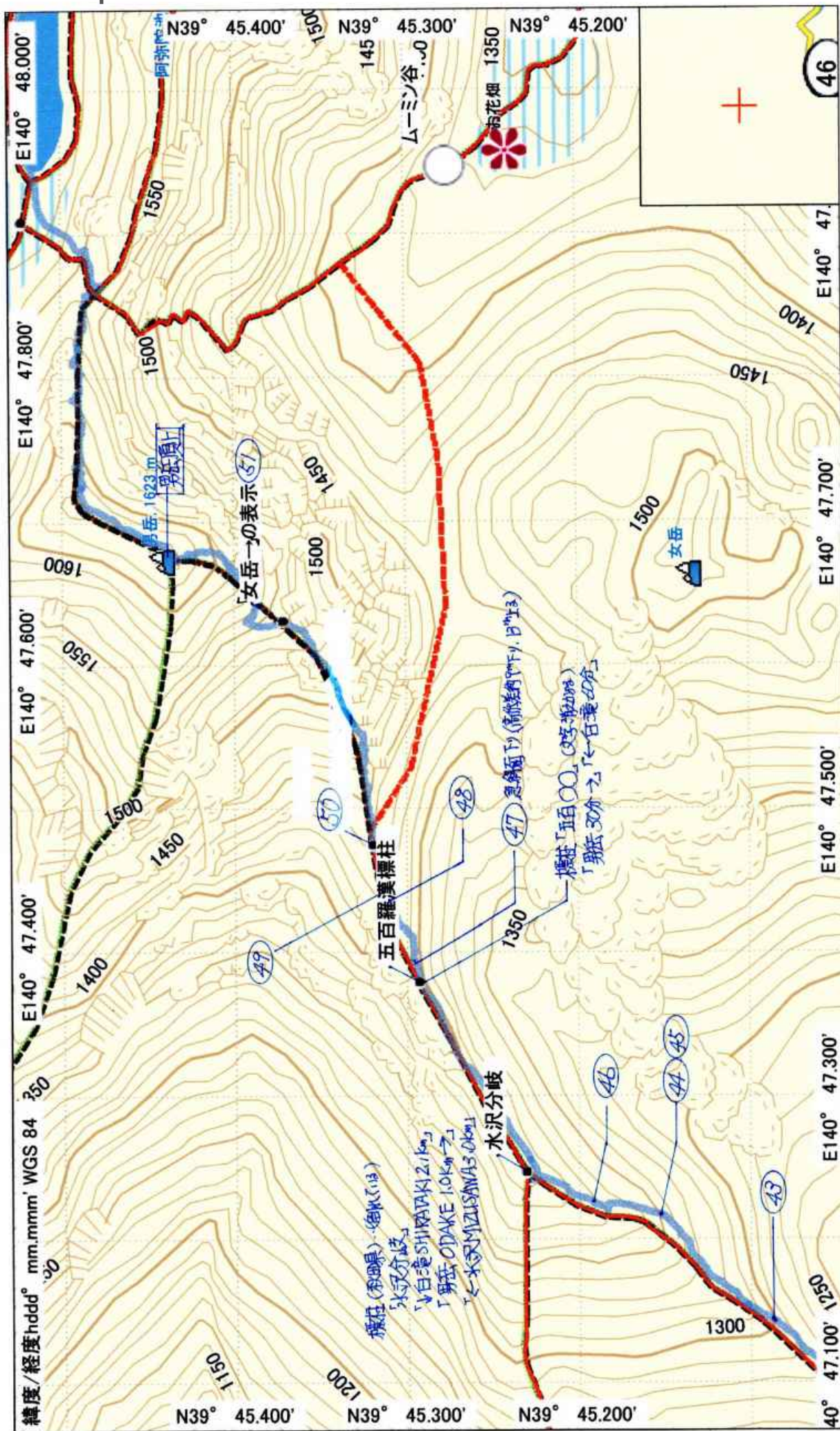


Japan TOPO 10M Plus v1.01
Garmin Corporation 1995-2010
Shobunsha Publications, Inc. 2010



200716 国見～横長根～金十郎長根～男岳 (3/4)

GARMIN.



200716 国見～横長根～金十郎長根～男岳 (4/4)