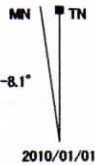
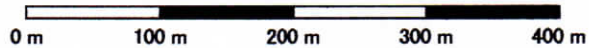


Japan TOPO 10M Plus v1.01
 Garmin Corporation 1995-2010
 Shobunsha Publications, Inc. 2010

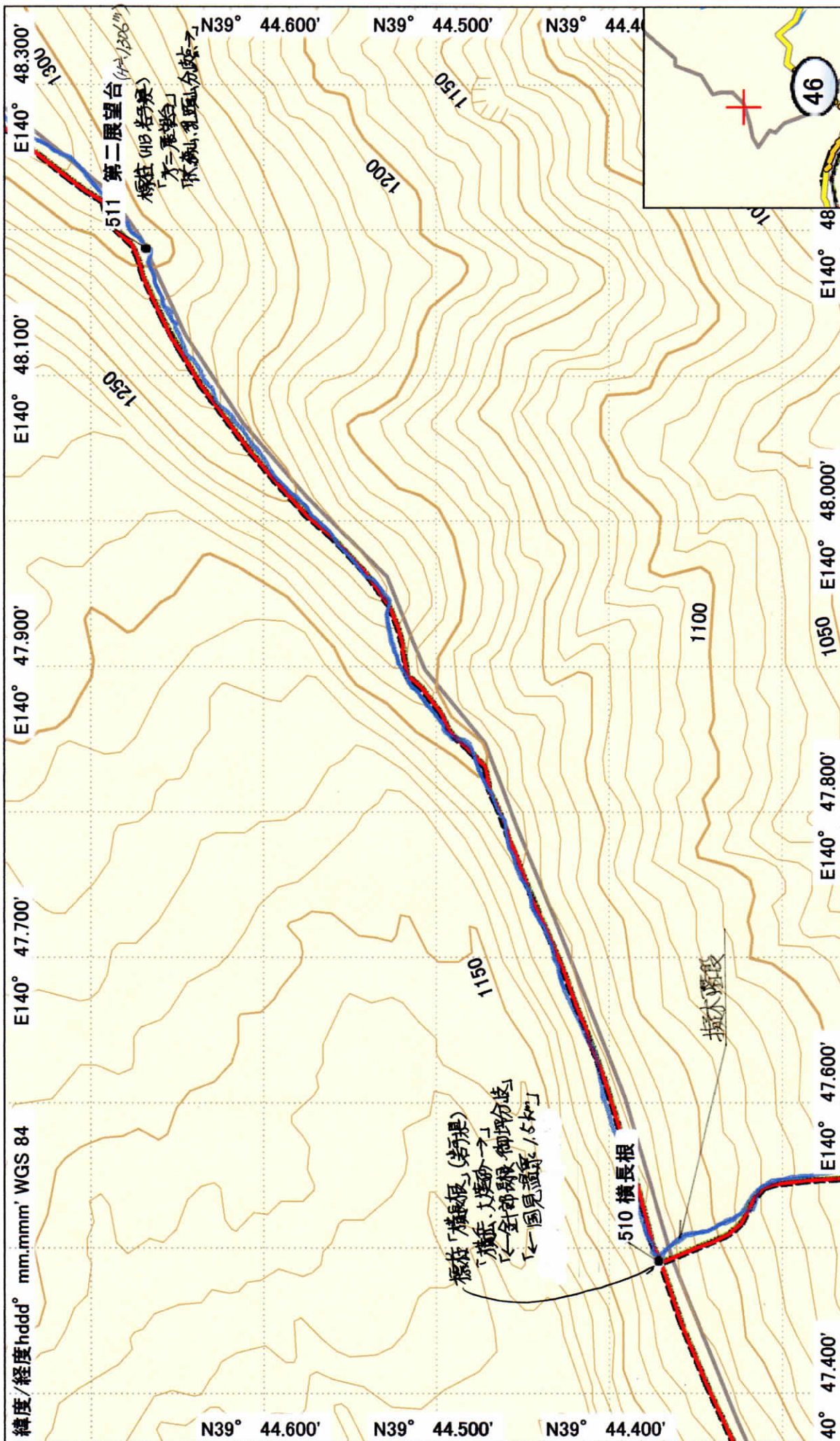


国見～横岳～阿弥陀池小屋往復 (1/4) 青色線: 踏査軌跡

2017(H29)/06/23 踏査: 工藤 大堰 榎林(調) 今宮 隆雄
 飯塚 吉田 上村 阿部

GARMIN.

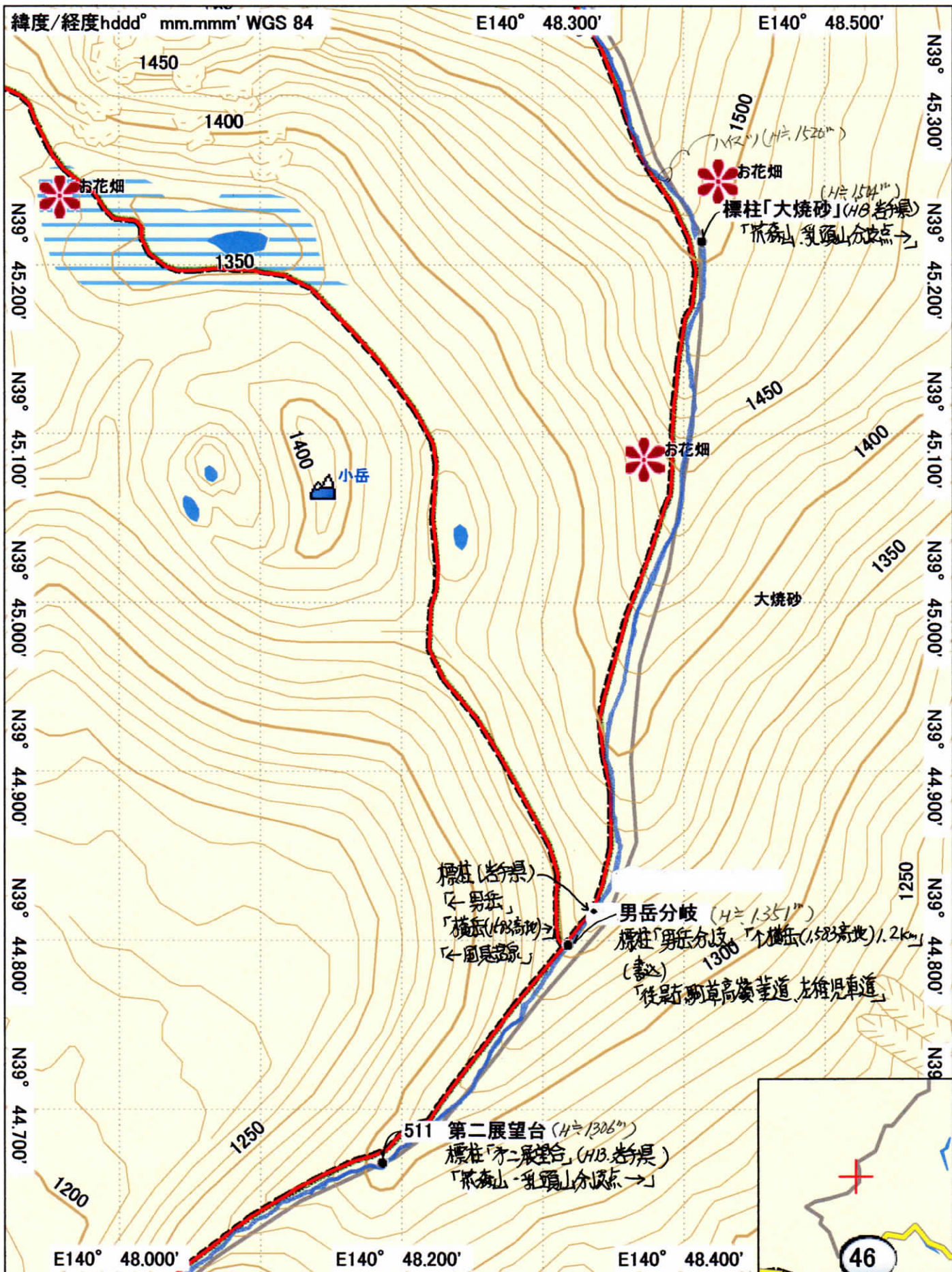
2010/01/01



Japan TOPO 10M Plus v1.01
 Garmin Corporation 1999-2010
 Shobunsha Publications, Inc. 2010

国見～横岳～阿弥陀池小屋往復 (2/4)





Japan TOPO 10M Plus v1.01
 Garmin Corporation 1995-2010
 Shobunsha Publications, Inc. 2010

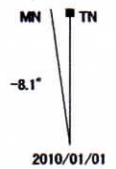
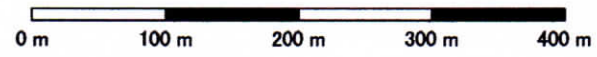
国見～横岳～阿弥陀池小屋往復 (3/4)



2010/01/01



Japan TOPO 10M Plus v1.01
 Garmin Corporation 1995-2010
 Shobunsha Publications, Inc. 2010



国見～横岳～阿弥陀池小屋往復(4/4)

