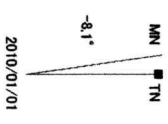


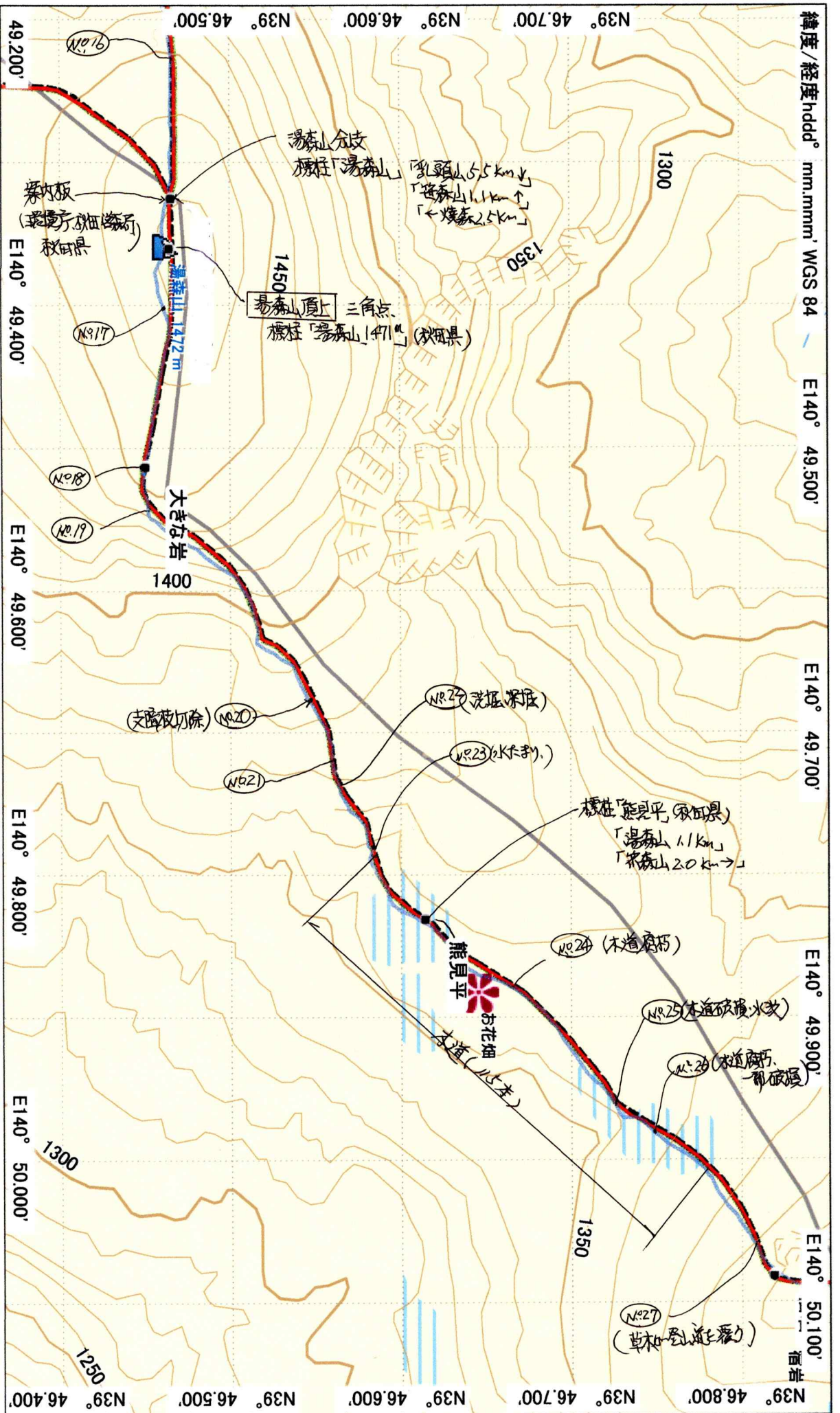


Japan TOPO 10M Plus v1.01
 Garmin Corporation 1995-2010
 Shobunsha Publications, Inc. 2010

青色線：踏査軌跡 (No. 1) 笠森谷真樹調査
 190724 現況調査(B)八合目P～笠森～湯森～笠森から乳頭～田代岱山荘～孫六
 2019(R1)10/24 踏査：I藤 (佐々木) 斎藤 沢島 所前



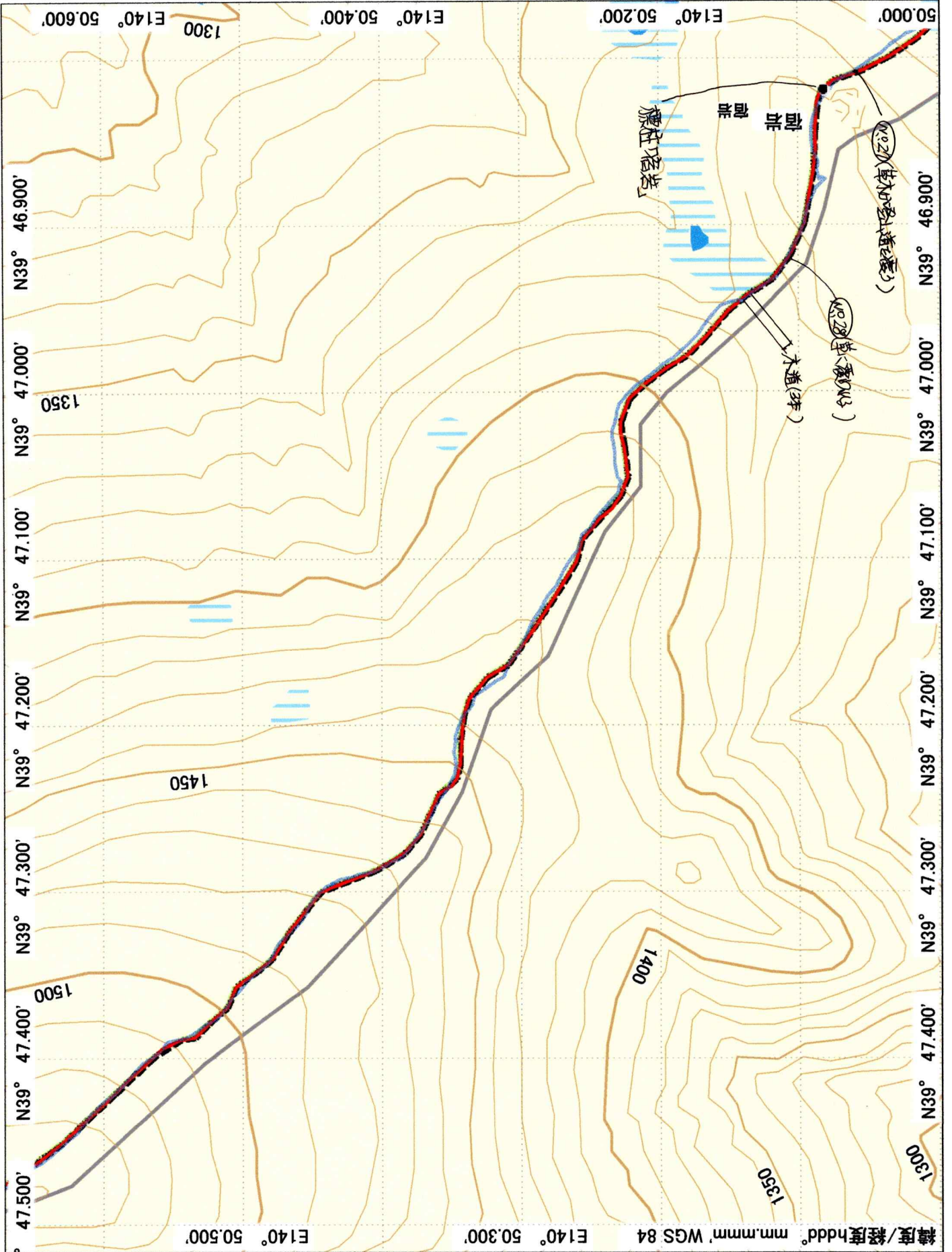
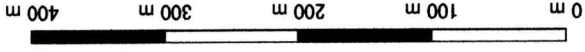
GARMIN

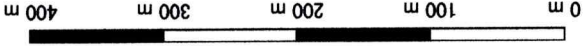


190724 現況調査(B)八合目～笹森～湯森～荒森から乳頭～田代岱山荘～孫六

GARMIN

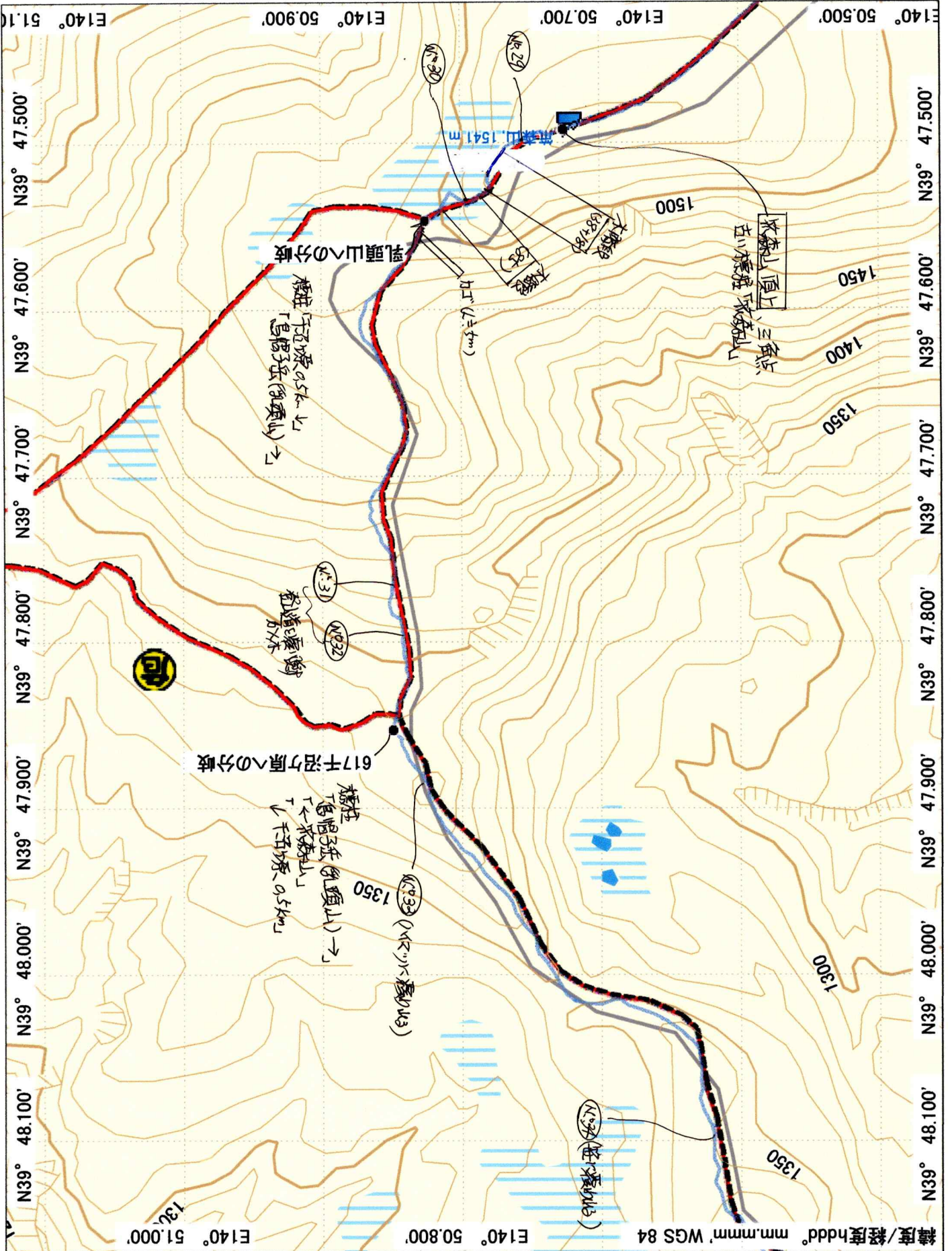
2010/01/01
-8.1°
MN TN





-8.1'

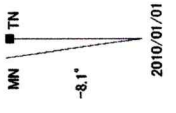
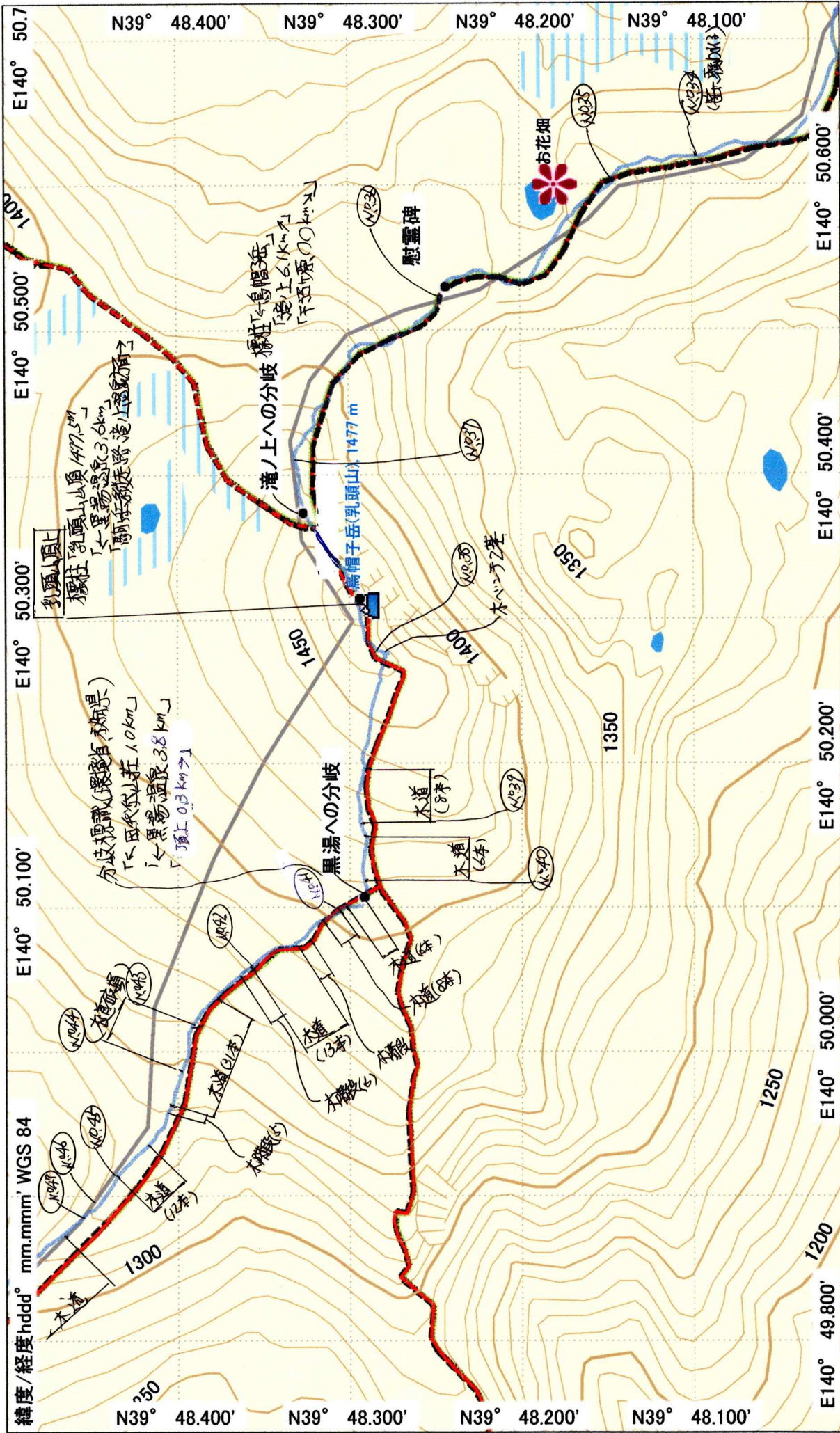
MN TN



緯度/経度 hddd° mm.mmm' WGS 84

E140° 51.000'

N39° 48.100'

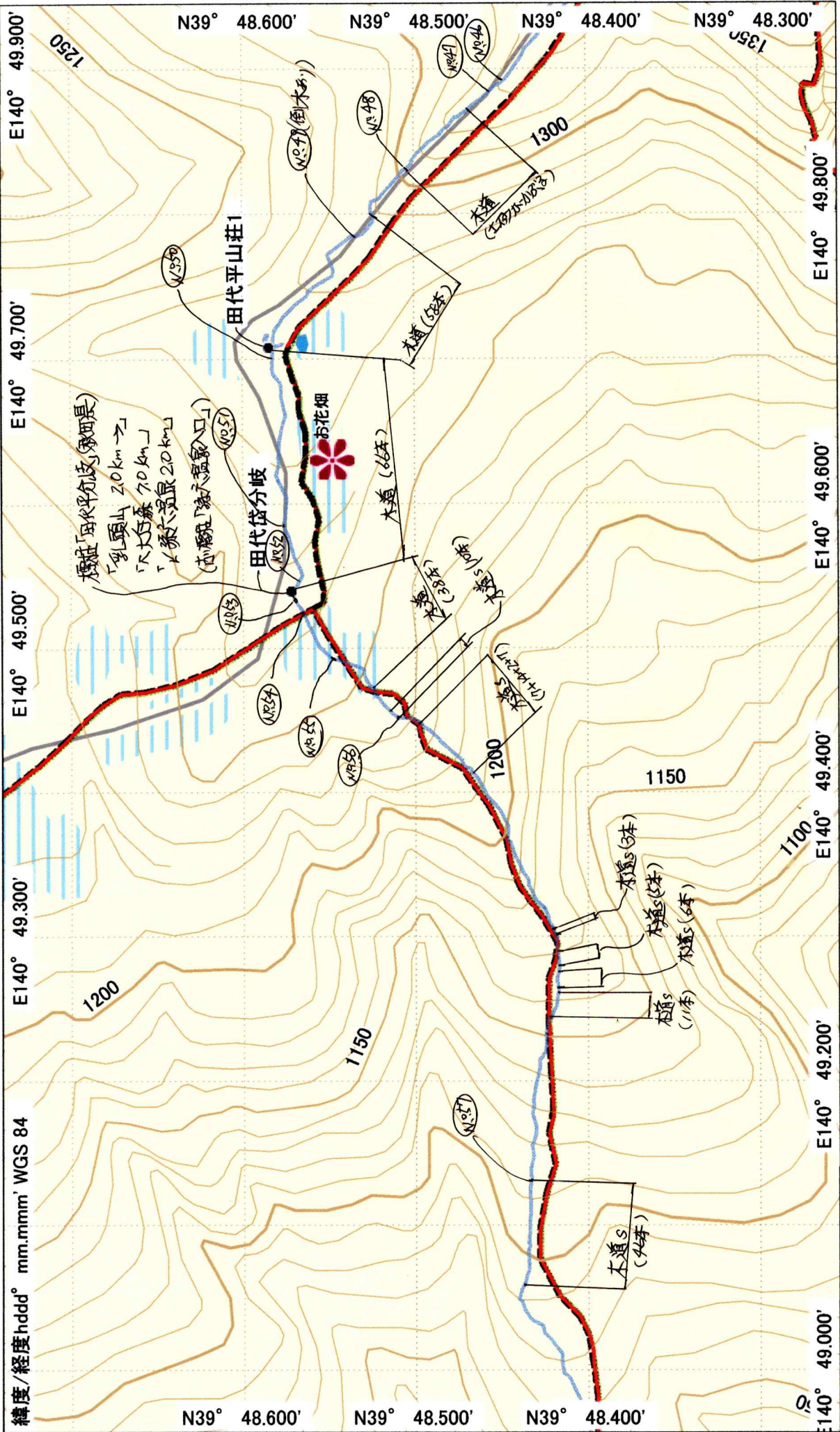


Japan TOPO 10M Plus v1.01
Garmin Corporation 1995-2010
Shobunsha Publications, Inc. 2010

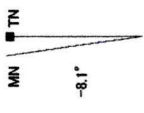
190724 現況調査(B)八合目P～笹森～湯森～箕森から乳頭～田代山荘～孫六

GARMIN.

2010/01/01



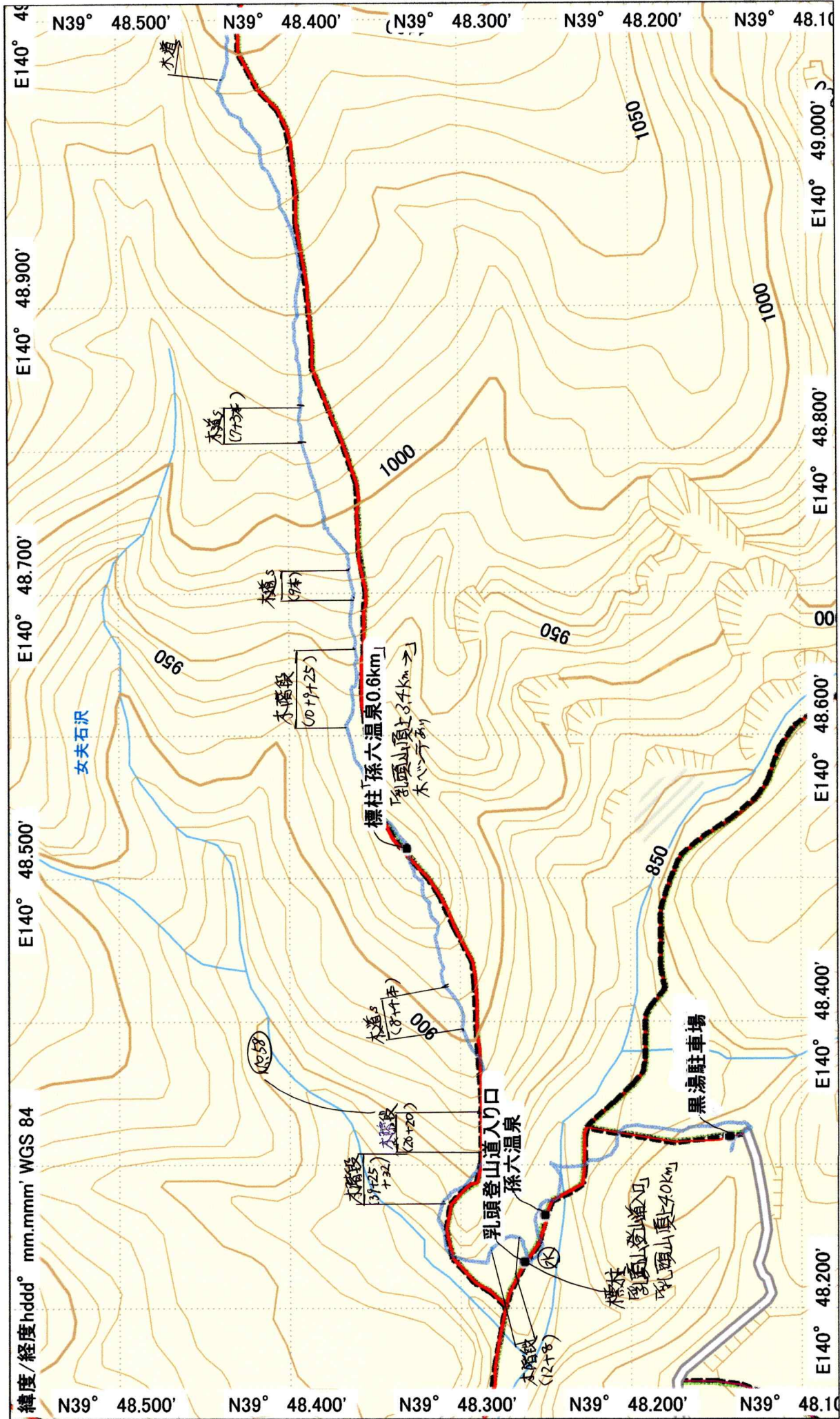
標柱「田代平山荘(象頭長)」
 「乳頭山 20km へ」
 「大台森 70km へ」
 「猿ヶ沢温泉 20km へ」
 (赤橋)「猿ヶ沢温泉入口」



190724 現況調査(B)八合目P～笹森～湯森～箕森から乳頭～田代山荘～孫六



2010/01/01



Japan TOPO 10M Plus v1.01
 Garmin Corporation 1995-2010
 Shebunsha Publications, Inc. 2010

0 m 100 m 200 m 300 m 400 m

MN TN
 -8.1°
 2010/01/01

190724 現況調査(B)八台目P～笹森～湯森～荒森から乳頭～田代岱山荘～孫六

