

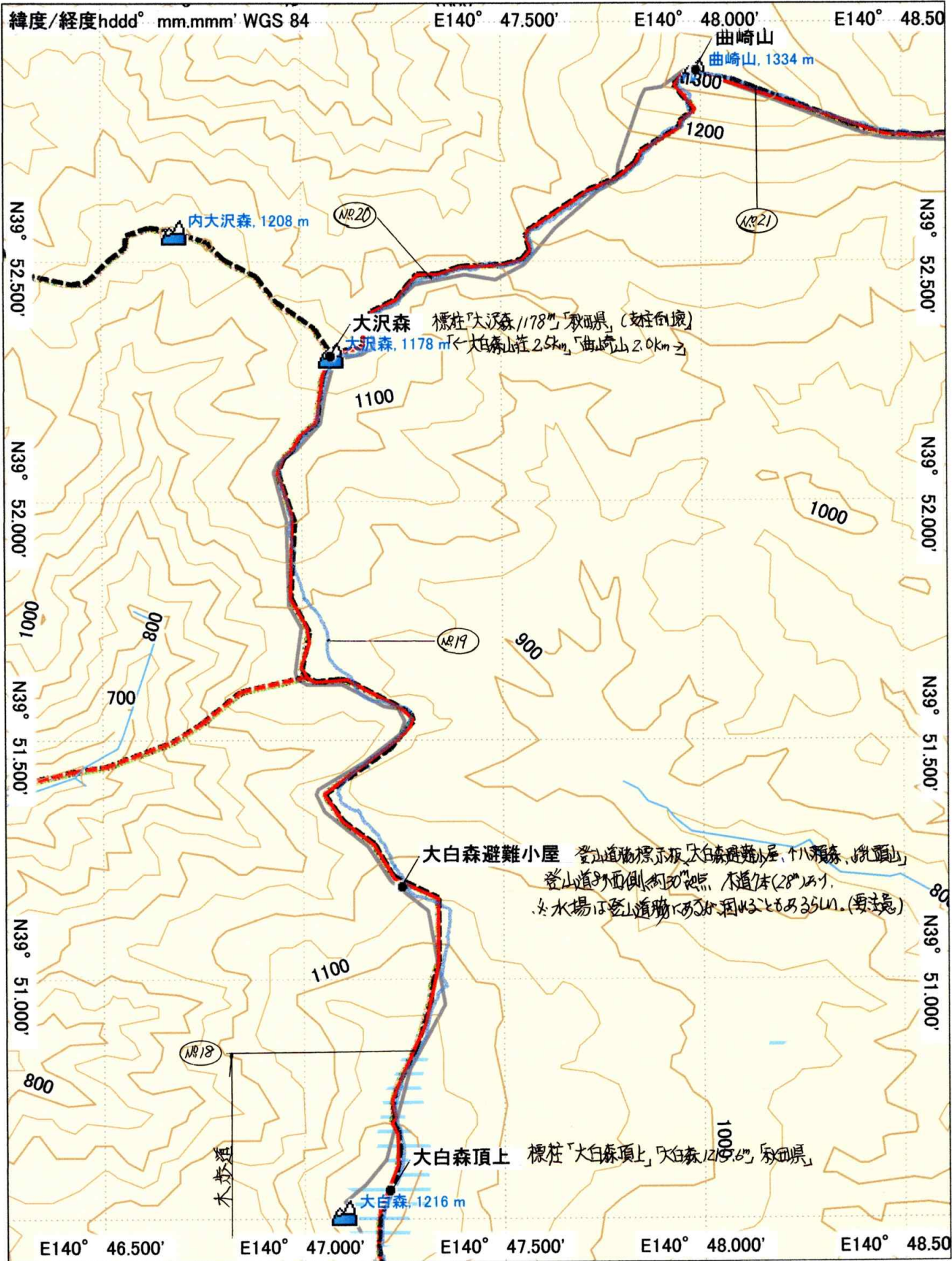
Japan TOPO 10M Plus v1.01
Garmin Corporation 1995-2010
Shobunsha Publications, Inc. 2010

鶴の湯～大白森～八瀬森～大深岳八瀬森分岐(～三ツ石山)

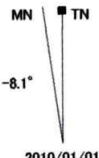
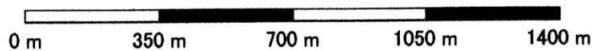
青色線: 踏査軌跡, (No. 1) は記録用標識設置
踏査年月日: 2019/10/17~18, 踏査者: 広野孝男, 民部風真, 所部正頭(大塚健) [作田河部]



2010/01/01



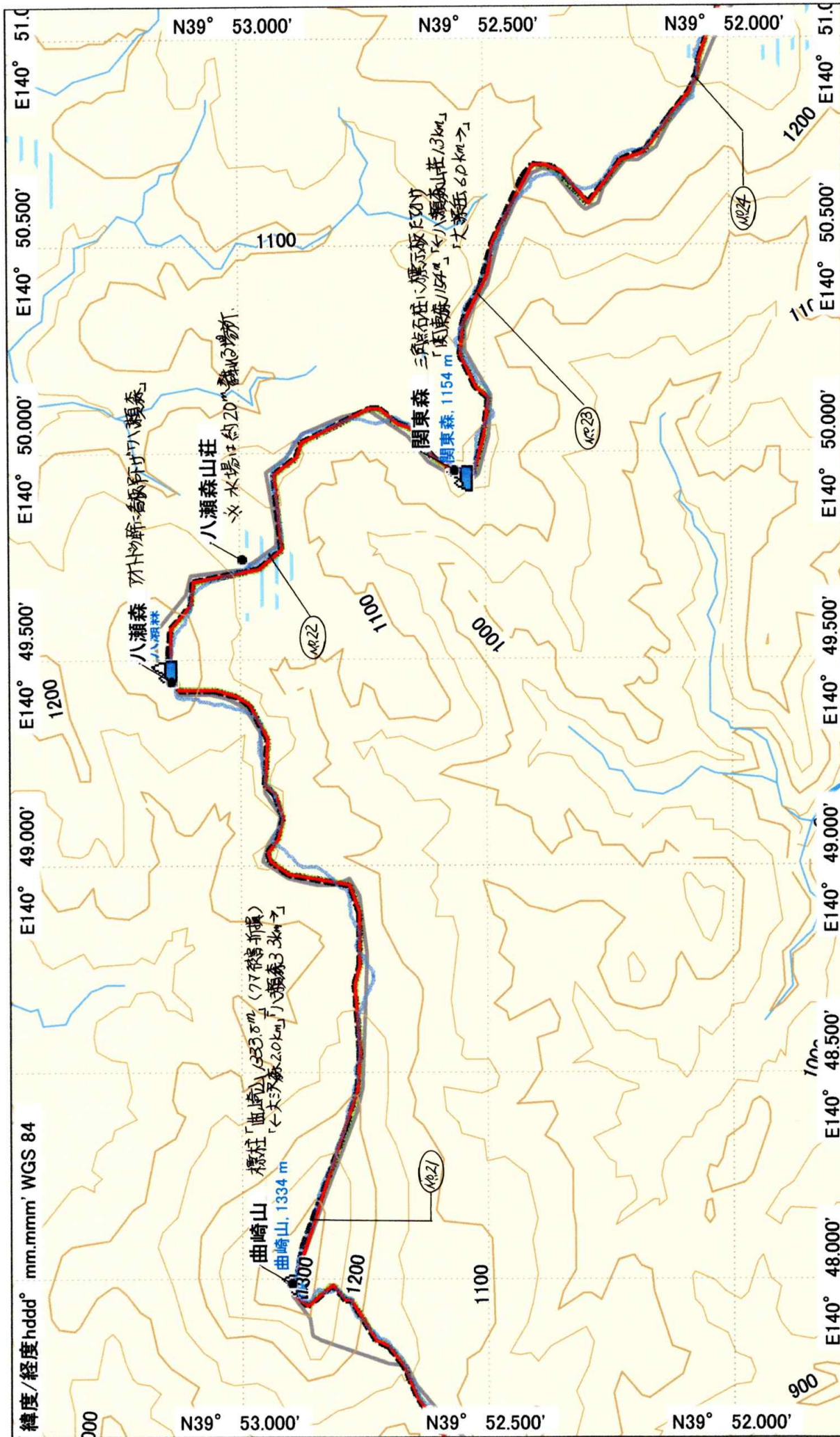
Japan TOPO 10M Plus v1.01
Garmin Corporation 1995-2010
Shobunsha Publications, Inc. 2010



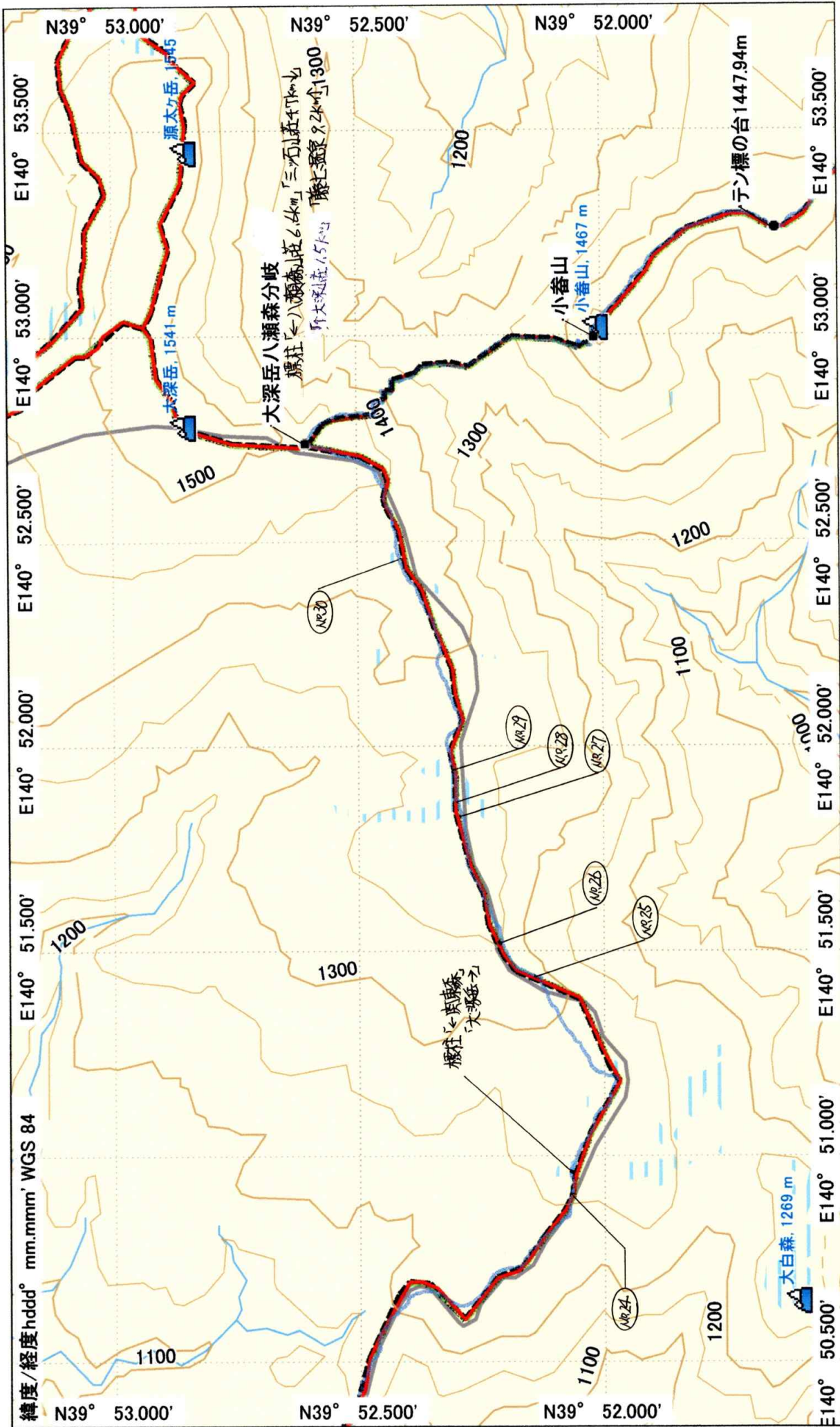
鶴の湯～大白森～八瀬森～大深岳八瀬森分岐(～三ツ石山)

GARMIN.

2010/01/01



鶴の湯～大白森～八瀬森～大深岳八瀬森分岐(～三ツ石山)



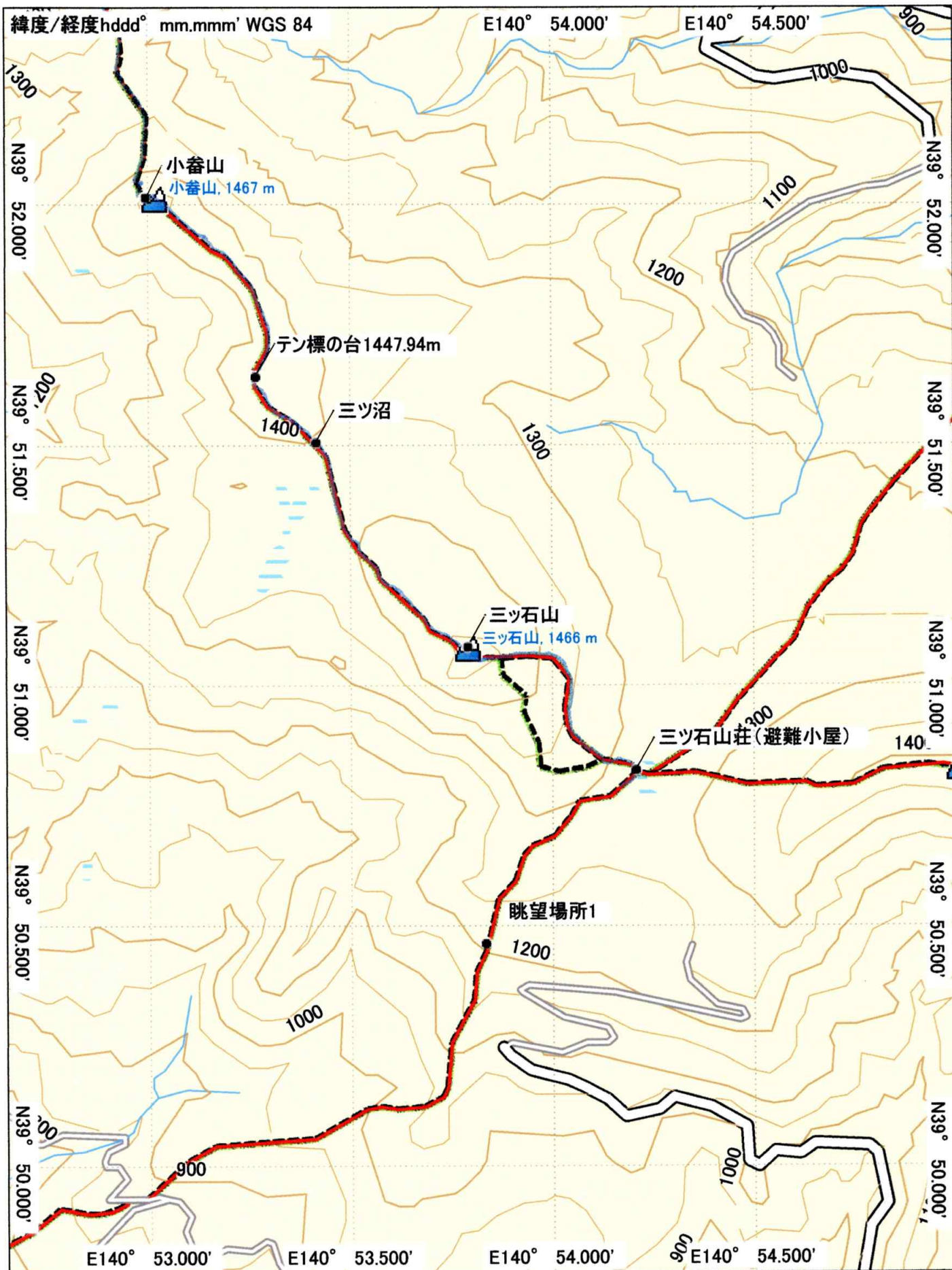
MN TN
-8.1'
2010/01/01



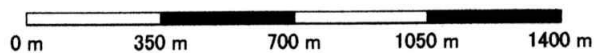
GARMIN.

鶴の湯～大白森～八瀬森～大深岳八瀬森分岐(～三ツ石山)

Japan TOPO 10M Plus v1.01
Garmin Corporation 1995-2010
Shobunsha Publications, Inc. 2010



Japan TOPO 10M Plus v1.01
Garmin Corporation 1995-2010
Shobunsha Publications, Inc. 2010



MN TN

鶴の湯～大白森～八瀬森～大深岳八瀬森分岐(～ミツ石山)

-8.1°

GARMIN.

2010/01/01